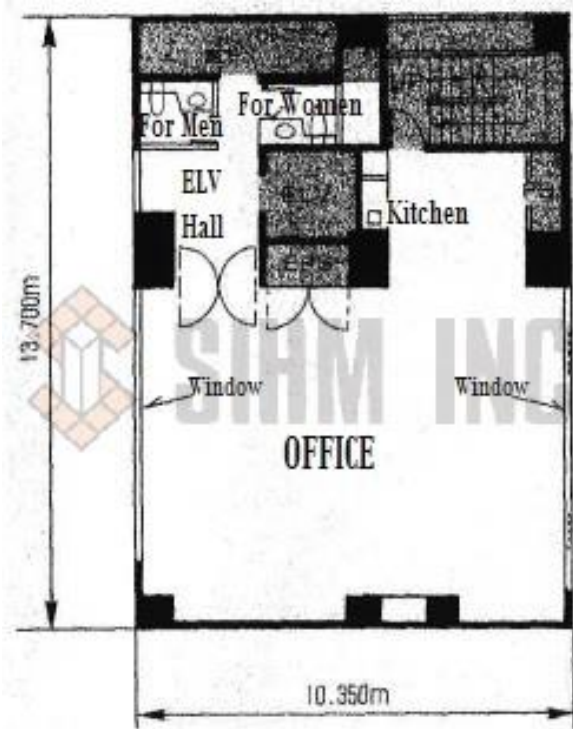


3<sup>rd</sup> Floor Résidence Bois Mori., 2-10-14, Minami Aoyama,  
Minato-ku, Tokyo 107-0062  
TEL:03-3470-4737 FAX: 03-3470-4740



Realtor's Office **SIHM Inc.**

Name	N.A Building 8F Office	May, 1992
Location	7-28, Kita Aoyama 2-chome, Minato-ku, Tokyo	
Bedrooms	Office	
Size	112.65sq.m. (Common space 28.10sq.m.)	
Rent	¥817,680.- (Excl. tax)	
Management fee	¥102,210.- (Excl. tax)	
Deposit	8 months	
Depreciation	20% of deposit + tax (at time of cancellation)	
Renewal fee	1 month a new rent	
Contract term	2 years	
Transportation	3 min. walk to Gaienmae sta. on Ginza line. 10 min. walk to Aoyama 1-chome sta. on Oedo line, Hanzomon line, Ginza line.	
Available	Negotiation (Available to view: Nove,ber 1 <sup>st</sup> , 2021~)	
Facilities	2 Toilets( for women and men), Mini-kitchen, Elevator, Management person on site (365 days from 8 am to 6 pm)	
Remarks	Fire insurance Required, Guarantee company Required	



- ※ One month's rent + tax will be charged as an agent fee.
- ※ Actual layout may differ from this floor plan. / Unfurnished
- ※ 弊社物件の自社 HP 及び WEB サイトなどへの転載不可

- 取引態様：媒介
- 手数料

手数料負担の割合	貸主	借主	100%
手数料配分の割合	元付	客付	100%